

GEA NEWSLETTER

April 2017

News from the President

Regina Sullivan

By: Regina Sullivan

HAPPY SPRING!



I hope you have all enjoyed the beautiful weather we have had this April break! Hopefully, you are relaxed and ready for remaining weeks ahead.

Have you ever asked yourself, "WHAT CAN I DO?" There are many ways to get involved with GEA. I encourage each and every member to visit www.CEA.org to stay up-to-date on important issues. It is also helpful to attend your building's "10 minute" meetings each month. I strongly recommend that you read your CEA and NEA publi-

cations that arrive in the mail.

As we enter April, please be sure to mark your calendars for your town's budget referendum; voter lists are available to the public, so Guilford teachers please get out and vote on **Tuesday, April 18th**.

Attention Guilford teachers of 25 years (anywhere), we want to honor you. Let your building representative know as soon as possible, so we can send you a token of our appreciation for your years of service.

Please do not hesitate to contact your building representative if you have any questions or concerns. The GEA is here to serve and protect you, our hard working teachers!

GEA News

NEA-RA and CEA-RA:

The CEA Representative Assembly (RA), held each May, is CEA's highest policy-making body. During two days of business, approximately 500 delegates take action to decide Association policies, including adopting amendments to the CEA RA Standing Rules, the CEA Constitution and Bylaws, approving revisions to the CEA Resolutions, and voting on new business items.

Delegates - elected from CEA's more than 160 local affiliates - also vote to approve CEA's fiscal-year budget. The budget is proposed by the CEA Finance Committee and then sent to the CEA Board of Directors prior to adoption by the RA. The budget amount approved at the RA determines the amount of annual CEA membership dues for the fiscal year that runs from July 1 to June 30. The budget supports all the strategic objectives, programs, and services provided to members. This year's annual CEA-RA meeting will be held May 5th and 6th at the Connecticut Convention Center in Hartford. The NEA-RA's annual meeting will be held at the beginning of July. If you are interested in attending either event, let your rep know ASAP.

SARAH Read-a-thon:

Grades K-6 wrapped up the 2017 SARAH readathon at the beginning of this month. We are still in the process of collecting some money, but it looks like we have had another successful year! Cox is in the lead with the most money raised! Thank you so much to all the K-6 teachers and building reps for helping with this event!



County Forum Meeting:

Meet state officers and other teachers! Please refer to the e-mail forwarded from your building rep in March/April with a link to register. Each dinner meeting starts at 5:00pm and concludes at 7:00pm. This is a great way to get informed. The next meeting for Middlesex County is February 1st at Baci Grill in Cromwell. You can check all county's dates at <http://www.cea.org/workshops/>.

GEA Officers

2016-2017

President
Regina Sullivan
Guilford HS
314-9837 (cell)

Vice President
Kristie Whitcomb
Guilford HS
453-2741

Treasurer
Diane Hall
Guilford HS
453-2741

PR Recording Secretary
Patty McLaughlin
Baldwin MS
457-0222 ext 443

Membership Secretary
Anne Lombard
Baldwin MS
457-0222 ext 446

GEA

16-17 Dues

Full Time Faculty
GEA: \$125
CEA: \$494
NEA: \$187
TOTAL: \$806

.5 - .26 Faculty
GEA: \$65
CEA: \$247
NEA: \$105
TOTAL: \$417

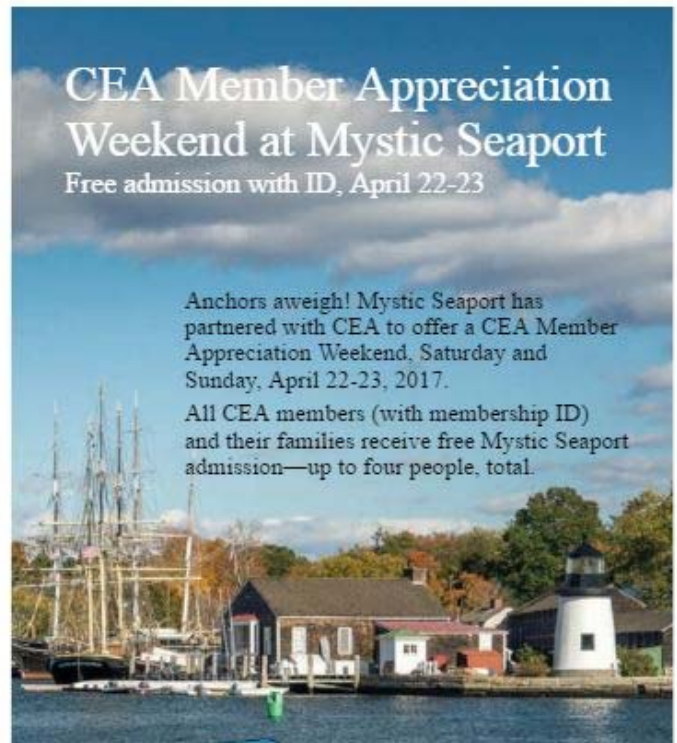
.25 - .01 Faculty
GEA: \$65
CEA: \$247
NEA: \$62.25
TOTAL: \$376.25

Call to Action - Protect School Funding and retirement

Legislators are presently considering shifting the costs of teacher retirement contributions from the state to cities and towns across Connecticut. This will increase local property taxes and cut local public education funding, leading to job cuts, larger class sizes, and fewer resources.

Tell your legislators not to shift state costs onto the backs of local property owners. Contact your legislators and ask them to vote NO on any state budget that will force cities and towns to raise property taxes and destroy public education.

Go to <http://www.cea.org/calltoaction/> (You may need your CEA log in information to access) to write and submit a "Call to Action" response to send to legislators today!



Important Reminders

- **GEA online!** Visit www.gea.yolasite.com.
- **Retirement workshops** are being offered. The CEA offers workshops which help teachers understand the teachers' retirement system and aid in planning for the future. Benefits are fully explained and questions can be answered. **Be sure to register online or call CEA to register.**
- We want to hear from you, our members! Do you have an entry for the "Spotlight" area? Please share ideas for upcoming newsletters by contacting Patty McLaughlin through e-mail or inter-school mail (BMS).

~ Benefits ~

NEA Benefits: Discover all we have to offer you by downloading our Programs & Services booklet. Inside you will find a complete listing of what is offered from NEA Member Benefits as well as other valuable services made available through NEA. Link = <https://www.neamb.com/cps/xbr/neamb/DOC-SID-C1B46B2E-8625A175-001.pdf>

CEA Benefits:

[Adventure Park, Bridgeport](#) OR [Adventure Park, Storrs](#) - CEA members and their families save nearly 40%!

[Buyer's Edge, Inc.](#) - Use this buying service to call wholesalers and distributors directly for quotes on major purchases such as appliances, TVs, cars, furniture, kitchen cabinets, and 14 other categories. Use group number/username: 1001 and password: member1 to receive a quote.

[TicketsAtWork.com](#) - Discounts on hotels, theme parks, attractions, movie tickets, events, car rentals, and more. Visit the website, click "Become a Member" to set up an account, and enter company code CEA.



Spotlight: Recognizing Our Members for a Job Well Done



The GEA would like to recognize the five building representatives who led the 2017 SARAH readathon in grades K-6. Kara Cebula (Jones), Kathy Chamberlain (Leete), Lori-Ann Luyckx (Lakes), Deb Leshine (Baldwin), and Sue Samsel (Cox) did a fabulous job AGAIN this year. A lot of time and effort goes into this event. These ladies worked to successfully launch the event in their building, passed out materials for all to participate, and tracked/collected all the pledges back so prizes could be awarded. THANK YOU! We will present SARAH with a check at a later meeting.



Please e-mail any newsletter submissions or ideas to Patricia McLaughlin.